

BeveLED[®] Trim Finishes



Standard Trim Finish Options for BeveLED[®] Square Trimmed



B1 - Painted Die Cast Trim (Downlight)
10 - White Bevel & Flange



B1 - Painted Die Cast Trim (Adjustable)
10 - White Bevel & Flange



B1 - Painted Die Cast Trim (Wall Wash)
10 - White Bevel & Flange



B1 - Painted Die Cast Trim
13 - Statuary Bronze Bevel & Flange



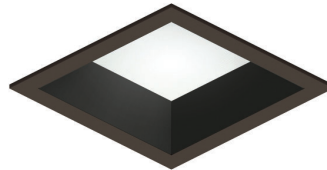
B1 - Painted Die Cast Trim
21 - Black Bevel & Flange



B1 - Painted Die Cast Trim
28 - Metalized Grey Bevel & Flange



AB1 - Black Anodized Bevel
02 - Black Anodized Flange



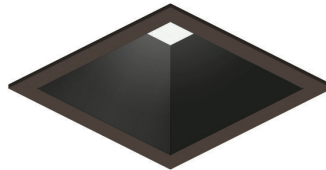
AB1 - Black Anodized Bevel
13 - Statuary Bronze Flange



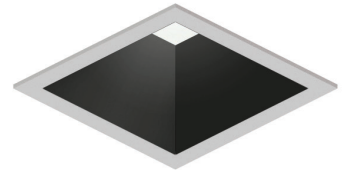
AB1 - Black Anodized Bevel
28 - Metalized Grey Flange



AB2 - Black Anodized Bevel
02 - Black Anodized Flange



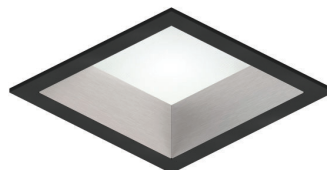
AB2 - Black Anodized Bevel
13 - Statuary Bronze Flange



AB2 - Black Anodized Bevel
28 - Metalized Grey Flange



AC1 - Clear Matte Anodized Bevel
01 - Clear Matte Flange



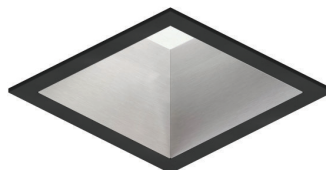
AC1 - Clear Matte Anodized Bevel
21 - Black Flange



AC1 - Clear Matte Anodized Bevel
28 - Metalized Grey Flange



AC2 - Clear Matte Anodized Bevel
01 - Clear Matte Flange



AC2 - Clear Matte Anodized Bevel
21 - Black Flange



AC2 - Clear Matte Anodized Bevel
10 - White Flange

Note: Not all finishes are available for all trims. Refer to specification sheet for availability.

Standard Trim Finish Options for BeveLED[®] Square Trimless



B1 - Painted Die Cast Trim (Downlight)
10 - White Bevel



B1 - Painted Die Cast Trim (Adjustable)
10 - White Bevel



B1 - Painted Die Cast Trim (Wall Wash)
10 - White Bevel



B1 - Painted Die Cast Trim
13 - Statuary Bronze Bevel



B1 - Painted Die Cast Trim
21 - Black Bevel



B1 - Painted Die Cast Trim
28 - Metalized Grey Bevel



AC1 - Clear Matte Anodized Bevel



AB1 - Black Anodized Bevel

Note: Not all finishes are available for all trims. Refer to specification sheet for availability.

Standard Trim Finish Options for BeveLED[®] Round Trimmed



B1 - Painted Die Cast Trim (Downlight)
10 - White Bevel & Flange



B1 - Painted Die Cast Trim (Adjustable)
10 - White Bevel & Flange



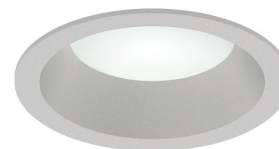
B1 - Painted Die Cast Trim (Wall Wash)
10 - White Bevel & Flange



B1 - Painted Die Cast Trim
13 - Statuary Bronze Bevel & Flange



B1 - Painted Die Cast Trim
21 - Black Bevel & Flange



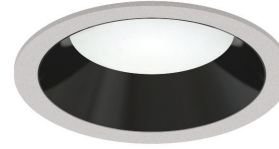
B1 - Painted Die Cast Trim
28 - Metalized Grey Bevel & Flange



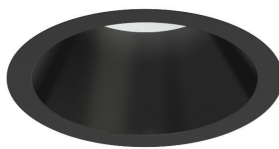
AB1 - Black Anodized Bevel
02 - Black Anodized Flange



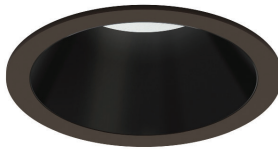
AB1 - Black Anodized Bevel
13 - Statuary Bronze Flange



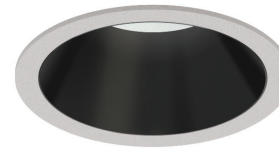
AB1 - Black Anodized Bevel
28 - Metalized Grey Flange



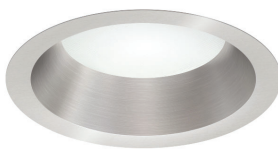
AB2 - Black Anodized Bevel
02 - Black Anodized Flange



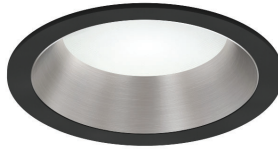
AB2 - Black Anodized Bevel
13 - Statuary Bronze Flange



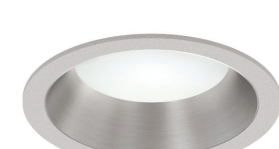
AB2 - Black Anodized Bevel
28 - Metalized Grey Flange



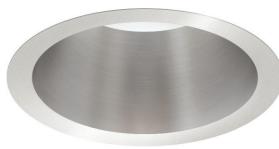
AC1 - Clear Matte Anodized Bevel
01 - Clear Matte Flange



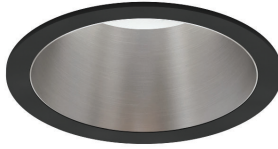
AC1 - Clear Matte Anodized Bevel
21 - Black Flange



AC1 - Clear Matte Anodized Bevel
28 - Metalized Grey Flange



AC2 - Clear Matte Anodized Bevel
01 - Clear Matte Flange



AC2 - Clear Matte Anodized Bevel
21 - Black Flange



AC2 - Clear Matte Anodized Bevel
10 - White Flange

Note: Not all finishes are available for all trims. Refer to specification sheet for availability.

Standard Trim Finish Options for BeveLED[®] Round Trimless



B1 - Painted Die Cast Trim (Downlight)
10 - White Bevel



B1 - Painted Die Cast Trim (Adjustable)
10 - White Bevel



B1 - Painted Die Cast Trim (Wall Wash)
10 - White Bevel



B1 - Painted Die Cast Trim
13 - Statuery Bronze Bevel



B1 - Painted Die Cast Trim
21 - Black Bevel



B1 - Painted Die Cast Trim
28 - Metalized Grey Bevel e



AB1 - Black Anodized Bevel



AC1 - Clear Matte Anodized Bevel

Note: Not all finishes are available for all trims. Refer to specification sheet for availability.