

Lighting



Elk Lighting
elklighting.com

An ideal match for a steampunk-inspired project, the Jonas Series features cast metal sockets, pipes and valve wheels fixed to a wood-accented backplate. Filament bulbs can be added for an authentic antique look.
Booth: 2775



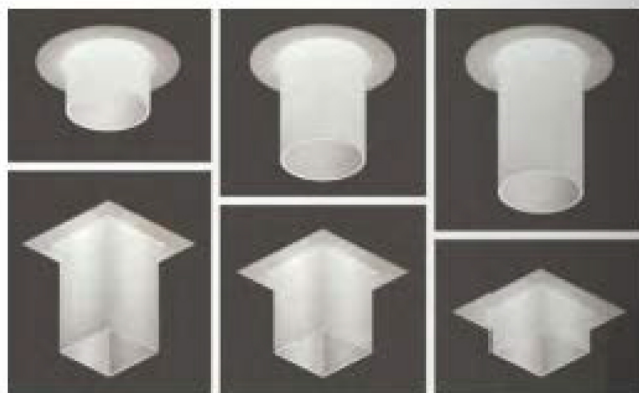
James de Wulf
jamesdewulf.com

Reminiscent of the long, meandering branches of a cherry blossom tree, this Falling Flowers chandelier provides a whimsical focal piece for any environment that has an abundance of vertical space.
Not Exhibiting



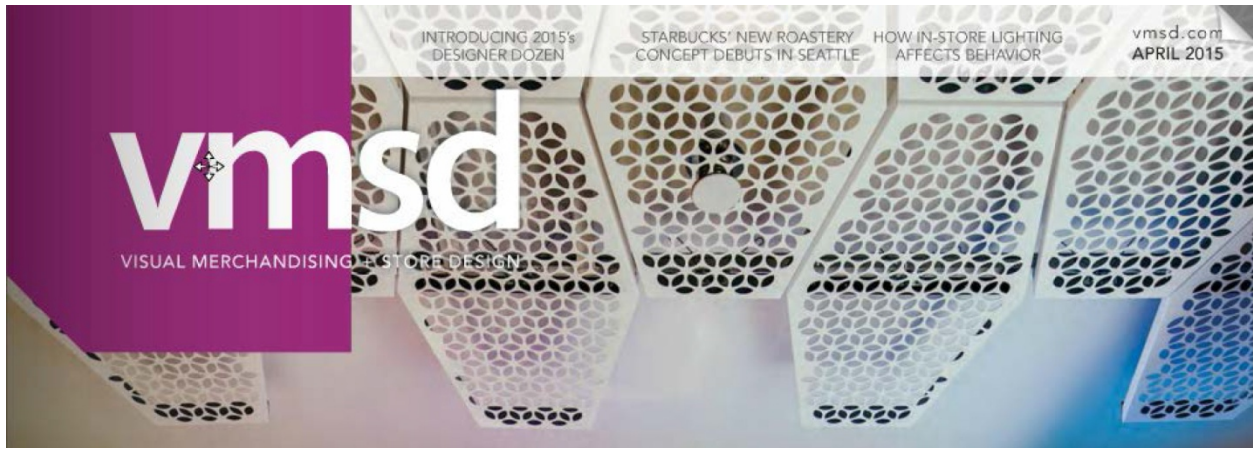
Lightblocks
lightblocks.com

Composed of a patented resin with a matte finish coat, this company's customizable Designer Series (seen here in a personalized zed project for engineering organization, ASME), can be customized with an array of colors to fit a multitude of uses.
Not Exhibiting



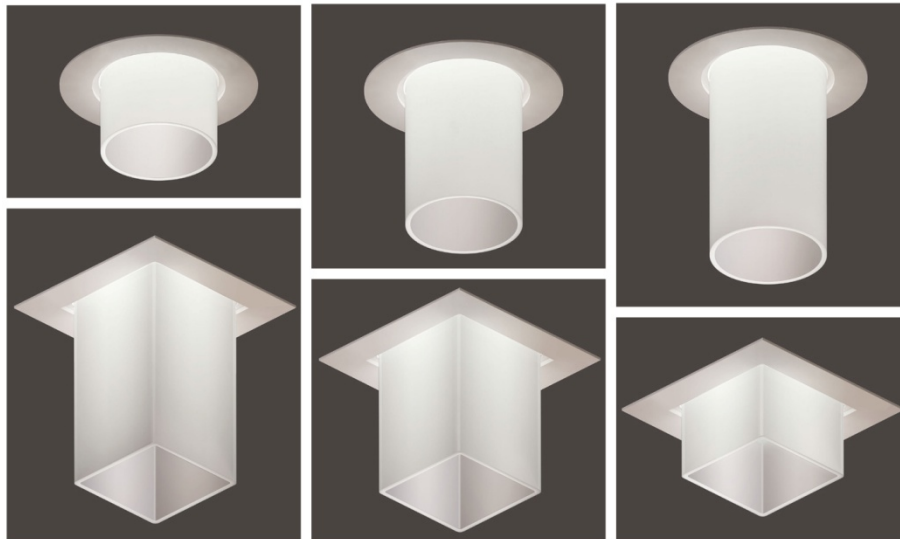
USA1 Lighting
usallighting.com

Reveal the light within! NanoLED Glow features decorative opal glass cylinders – available in square and round profiles – that extend 1.5- to 4-in. below the ceiling plane to emit a gentle, ambient light.
Booths: 607, 713



SHOWROOM

Lighting



USAI Lighting

usailighting.com

Reveal the light within! NanoLED Glow features decorative opal glass cylinders – available in square and round profiles – that extend 1.5- to 4-in. below the ceiling plane to emit a gentle, ambient light.

Booths: 607, 713



Reprinted from vmsd, April 2015

http://www.nxtbook.com/nxtbooks/STMG/vmsd_201504/index.php#/50