

USAI
Lighting



Armstrong
World Industries

USAI Lighting Integration for WoodWorks® Ceiling Systems

USAI + WoodWorks[®] Ceiling Systems

USAI[®] Lighting and Armstrong[®] World Industries are committed to making lighting and ceiling integration easy and perfect. We've taken out the guesswork with out-of-the-box solutions that provide perfection every time. Always looking for ways to raise the standard in product performance and design aesthetics, USAI[®] Lighting and Armstrong[®] World Industries offer architects, designers and contractors solutions to integrate recessed downlights with ceiling systems – seamlessly with repeatable precision.

The USAI Lighting + WoodWorks Ceiling Systems integration pairs USAI's Micro Multi-Cell, BeveLED[®] 2.2, and BeveLED Mini[®] with the ideal WoodWorks ceiling panels. Meticulously engineered with a patented design, the integration provides the perfect fit and alignment with vertical and horizontal slat WoodWorks panels. Choose the perfect pairing for your next project.

4 Light Fixture Families from USAI Lighting



1.25" Cells
Micro Multi-Cell
for WoodWorks
Vertical Slats



1.25" Cells
Micro Multi-Cell
for WoodWorks
Horizontal Slats



3"
BeveLED Mini for
WoodWorks Linear
Solid Wood Panels
Horizontal Panels



4.5"
BeveLED 2.2 for
WoodWorks Linear
Solid Wood Panels
Horizontal Panels



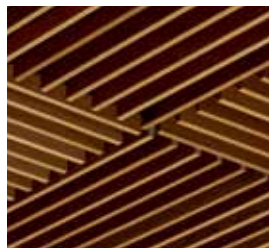
5 WoodWorks Ceiling Systems from Armstrong



WoodWorks
Grille-Forté



WoodWorks
Grille-Classics

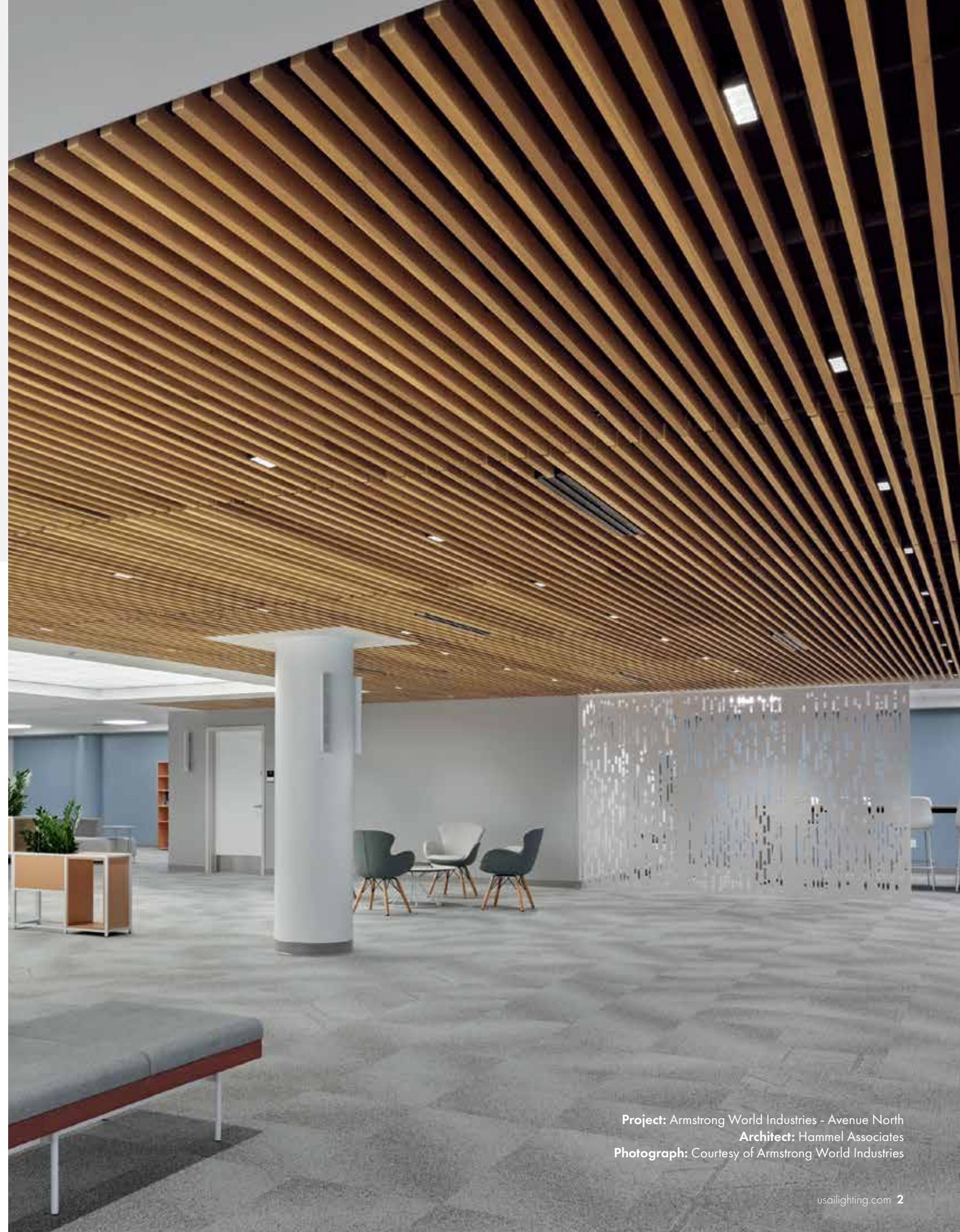


WoodWorks Grille
Tegular

WoodWorks Linear
Tegular



WoodWorks
Linear Solid Wood Panels



Project: Armstrong World Industries - Avenue North
Architect: Hammel Associates
Photograph: Courtesy of Armstrong World Industries



USAI Lighting for WoodWorks® Grille

Forté, Classics, Tegular
Vertical Slats

Easy 3-Step Installation

Easily integrate WoodWorks Grille ceilings with Micro Multi-Cell fixtures from USAI Lighting.
NOTE: WoodWorks Grille does not require any modifications to integrate Micro Multi-Cell for Vertical Slats.



1 Clip fixture with Snap-In Mounting System directly on the grid - Seismically Rated.



2 Connect Micro Multi-Cell into its housing using the fixture's yoke kit.



3 Adjust brackets on patented Snap-In Mounting System to align Micro Multi-Cell and sit flush into the WoodWorks panel slats.



= Fixtures perfectly aligned

USAI Products for WoodWorks Vertical Slat Panels

Micro Multi-Cell for WoodWorks Vertical Slats



1.25" Square Cells

- 2 Cell, 4 Cell, 6 Cell, 8 Cell
- Downlight, Wall Wash
- Millwork Trim

 Classic White

Compatible WoodWorks Grille Ceiling Systems:



- WoodWorks Grille-Forté Solid Wood Panels
- WoodWorks Grille-Forté Veneered Panels
- WoodWorks Grille-Classics Solid Wood Panels



- WoodWorks Grille-Tegular

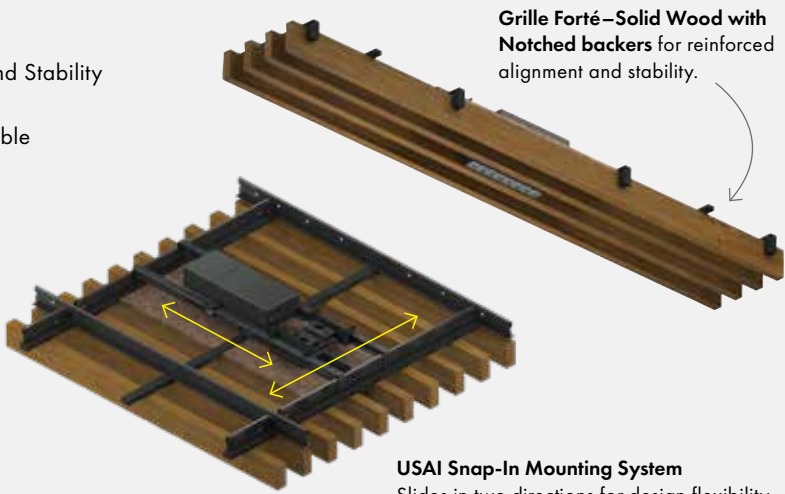


- WoodWorks ACGI Grille Backer Series 1
- WoodWorks ACGI Micro-Grille Series 1
- WoodWorks ACGI Grille Dowel Series I

Designed For A Perfect Fit

+ WoodWorks Grille-Forté (Vertical Slats)

- ✓ New Enhanced Grille Design
- ✓ Notched Backers Reinforce Slat Alignment and Stability
- ✓ Comprehensive Range of Grille Styles Available
- ✓ Perfectly Aligned Installation
- ✓ Patented Snap-In Mounting System
- ✓ Clips onto Grid
- ✓ Dedicated Brackets Coordinate with Armstrong Ceilings for a Perfect Height
- ✓ Sliding Housing Mounting System-provides flexibility with fixture placement



USAI for WoodWorks® Horizontal Slat Panels

Micro Multi-Cell for WoodWorks Horizontal Slats



WoodWorks
Linear Tegral Panels

1.25" Square Cells

- 2 Cell, 4 Cell, 6 Cell, 8 Cell
- Downlight, Wall Wash
- Millwork Trim

 Classic White

BeveLED Mini® for WoodWorks Linear Panels



WoodWorks
Linear Tegral Panels



WoodWorks Linear Solid
Wood Panels

3" Round, Square

- Downlight, Adjustable, Wall Wash
- Millwork Trim

 Classic White

 Warm Glow® Dimming

 Color Select® Tunable White

 Declare Label Red List Approved

BeveLED® 2.2 for WoodWorks Linear Solid Wood Panels



WoodWorks Linear Solid
Wood Panels


4.5" Round, Square

- Downlight, Adjustable,
Wall Wash
- Millwork Trim

 Classic White

 Warm Glow® Dimming

 Color Select® Tunable White

 Declare Label Red
List Approved



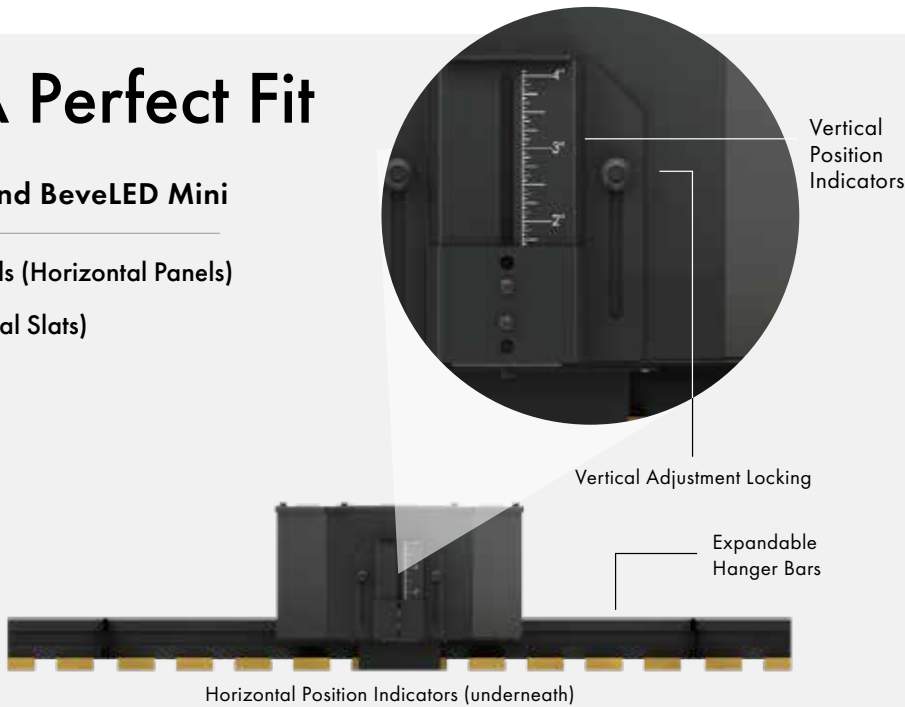
BeveLED Mini for WoodWorks
Linear Solid Wood Panels

Designed For A Perfect Fit

Micro Multi-Cell, BeveLED 2.2 and BeveLED Mini

- + WoodWorks Linear Solid Wood Panels (Horizontal Panels)
- + WoodWorks Linear Tegral (Horizontal Slats)

- ☒ Perfectly Aligned Installation
- ☒ Patented Snap-In Mounting System
- ☒ Clips onto Grid
- ☒ Bracket Ruler Indicators – quick, easy + accurate on-site height adjustment



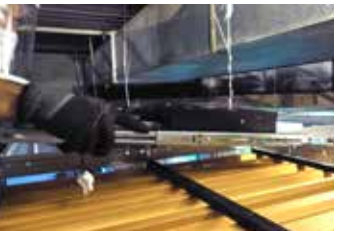
Easy 3-Step Installation

Easily integrate a WoodWorks Wood Panel ceiling installation with downlighting fixtures from USAI Lighting.

FEATURED BELOW: WoodWorks Linear Solid Wood Panels are compatible with BeveLED Mini and BeveLED 2.2. The BeveLED Family for WoodWorks are uniquely designed to sit flush to the panel slats with patented and adjustable Snap-In Mounting System.



1 Cut 1-2 slats with the recommended equipment and measurements to fit BeveLED Mini or BeveLED 2.2 fixtures.



2 Clip fixture with Snap-In Mounting System directly on the grid - Seismically Rated.



3 Adjust brackets on Snap-In Mounting System to align BeveLED Mini or BeveLED 2.2 with slats.



= Fixtures perfectly aligned



Project: Armstrong World Industries - Avenue North
Architect: Hammel Associates
Photograph: Photos courtesy of Armstrong World Industries

USAI[®]
Lighting

CALL, EMAIL, OR VISIT [USAILIGHTING.COM](https://usailighting.com) TO LEARN MORE

USAI LIGHTING COLLABORATORY
13 CROSBY STREET
NEW YORK, NY 10013
(845) 234-4090
SHOWROOM@USAILIGHTING.COM

USAI LIGHTING HEADQUARTERS
1126 RIVER ROAD
NEW WINDSOR, NY 12553
(845) 565-8500
INFO@USAILIGHTING.COM

©2024 USAI Lighting All rights reserved.
USAI, BeveLED, BeveLED Mini, Classic White, Warm Glow, and Color Select are registered trademarks of USAI, LLC. All designs protected by copyright. Covered by US Patents. Armstrong[®], the Armstrong logo, and WoodWorks[®] are trademarks of AWI Licensing LLC. CA-101B